



SP2000H/VA/3VA/EA...

Electrical Actuator for 90° Switch SP2000/EA

for gas sample probes with integrated ball valve

Special Features

- **Factory assembly**
- **Different voltages possible**
- **End position indication**

Application

The electrical actuator is used for remote control of the 2- or 3-way ball valve integrated into the gas sample probe SP2000. As an alternative to pneumatic remote control, additional control air and the installation of control air lines are not required.

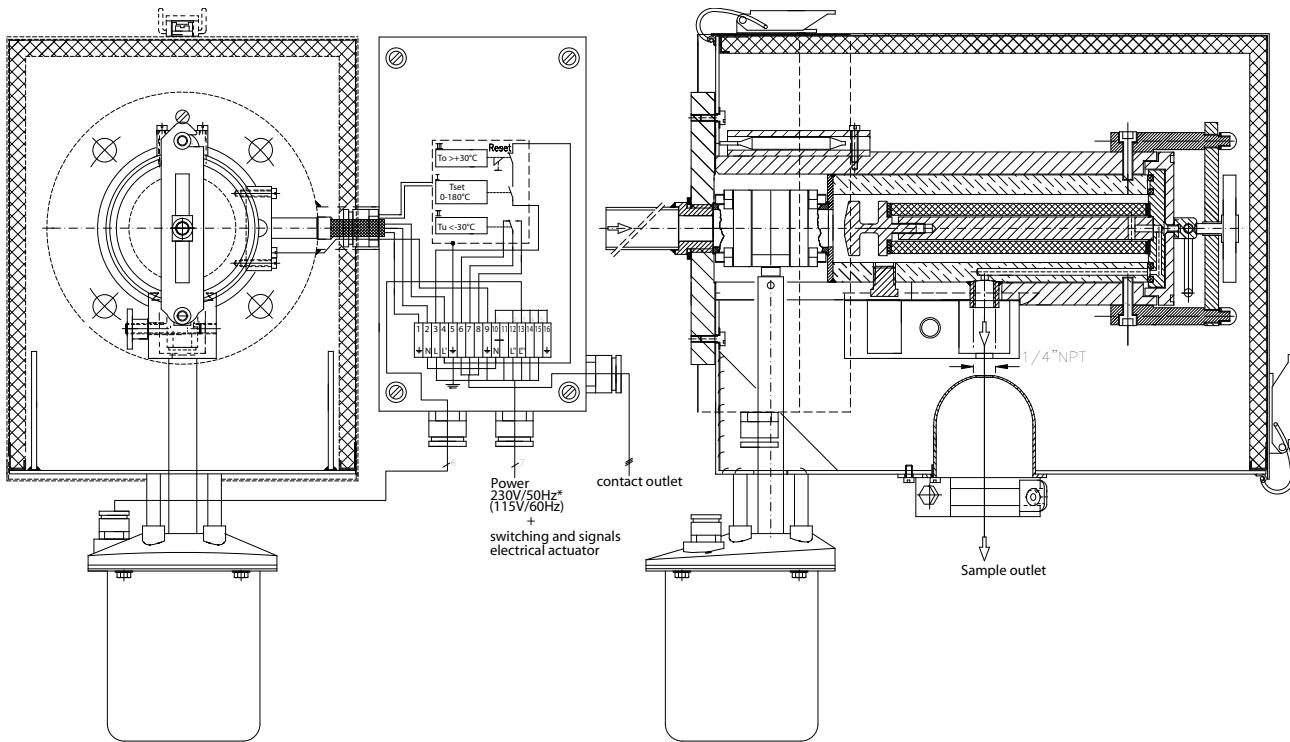
Description

For automatic operation of the ball valve, the electrical actuator/EA is mounted on the gas sample probe SP2000 at the factory and connected to the probe junction box.

The power supply for the servomotor is normally 230 V 50 Hz. Power supply 24 V DC is also available.

To control the actuator, the control voltage on both on/off inputs is switched accordingly. In the standard version, the end position of the actuator can be monitored by tapping the internally switched control voltage at the terminals.

Additional potential-free contact outputs for indicating the operating status are available as an option.



* Standard

Technical Data

SP2000-EA	
Part No. 20S9342	Electrical actuator EA-230, 230 V 50 Hz *standard
Part No. 20S9342d	Electrical actuator EA-24, 24 V DC
Part No. 20S9343	Extra charge for 2 potential-free contacts EA...K to indicate operating position open/close
Power supply	230 V 50 Hz 140 W*, (or 115 V 60 Hz or 24 V DC)
Ambient temperature	-20 up to +70 °C [-4 to 158 °F]
Degree of protection	IP65 EN 60529